

THE NEWS letta

Newsletta

Cohort 8

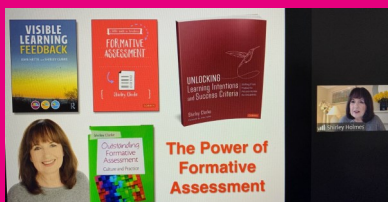
www.letta.org.uk

Twitter: @LETTA_TSA

March 2021



What do trainees say?



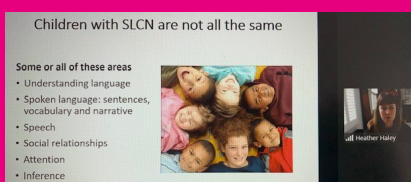
About The Power of Formative Assessment:

"Shirley delivered an insightful session on formative assessment. Shirley discussed the pros and cons of praise and how to deliver praise as feedback. She noted the risks of over praising, causing learners to be focused on the praise rather than their learning."



About Working with your SENCo:

"Working collaboratively together to help support pupils' learning in the classroom, building effective and meaningful relationships with pupils' parents."



About Speech, Language & Communication:

"The session made me think about how I give instructions to children. I am now even more aware of the need to keep instructions simple."

Spring has arrived bringing us sunshine, positive changes and having all children back in school. In this short but rather busy half term, everyone has been working extremely hard. The LETTA team would like to thank you for your hard work and wish you all a wonderful Easter break.

Tutorials

LETTA tutors have continued with one to one tutorials with trainees and mentors. We also had a group tutorial focusing upon SEND. More will follow on different themes.

Mentor training

We had three drop in sessions for mentors including new placement mentors. We will continue to have virtual drop in sessions every half term.

PGCE

SHU tutors led a whole day session around the second assignment which is a lesson study / practical research investigation. Different options to complete the assignment were shared, given current Covid restrictions.

Sheffield Hallam University

Placements

Our first group of trainees have completed their second school placement. Remaining trainees will be starting on either Monday 12th or 19th April.

Trainees are expected to continue to take a lateral flow test twice a week.

Education Endowment Foundation Resources

The EEF have published reports on planning for Covid recovery. The following reports are available on the EEF website or via the QR code:

- Improving Mathematics in the Early Years and Key Stage 1
- Improving Literacy at Key Stage 1
- Improving Literacy at Key Stage 2

Spring 2 training

The Power of Formative Assessment

Shirley Clarke
@shirleyclarke_



Seeking Sustainability

Earthwatch
@earthwatch_org

SEND. Creating a positive and supportive environment for all pupils

Geraldine O'Grady, LETTA tutor

Raising boys' achievements

Gary Wilson
www.garywilsonraisingboysachievement.com

Speech, Language & Communication

Heather Haley & Sophie Harvey
@BlossomTreeSLT



Maths 3-7 Fran Paffard
@FPaffard

Maths 5-11 Max Lawson, Maths Hub lead & London Fields Primary
@LF_Primary

Bar modelling David Adams, Sandringham Primary School
@SandringhamE7

Co-learning with experts

Margaret Mulholland & Katherine Walsh
@MargaretMulhol2
@katherine_ethel



Reading, grammar and language acquisition

Lindsay Pickton
@EnglishHubUK

Role of the Educational Psychologist Educational Psychology Dept, Tower Hamlets

